

Jan Serr: Face It

A Biography in Portraits

This exhibition covers three simultaneous, layered and overlapping ideas.

The first idea is biography. The artist painting herself to discover who she is, discovering different selfs as she matures as an artist and person.

Today I look at the exhibition as a whole and I ask myself who is this young woman from long ago who uses my name and wears a Stetson hat? Why is she doing that? There is another young woman wearing headphones that halo her head. She's transfixed. What music is she listening to? Is she a singer? Is she singing along? Another woman, fresh out of the bath, buff and unblushing. At some point I renamed myself, "Janice Serr" became "Jan Serr" – blunt, bold, naked.

A second idea is art history, or, why the Figure? In 1963, age 20, I was a music major, piano and voice. As a freshman, I sang the solo lead with the college choral concert. I knew my body, how to stand, breathe, project, and gesture. When I took my first visual art course, instructors and classmates were working in the styles of Abstract Expressionism and Pop Art. I asked a different question, why not paint myself? As a vocal soloist I was accustomed to people looking at me as if I were an artist's model. I turned the look around. What did I look like? Might I wear a Stetson hat or headphones or wear nothing whatsoever? The Singer became the Self. I was more interested in people and myself than I was in a Brillo box or existential angst.

The third idea is the wonderful discovery of materials and processes. The earliest works are traditional oils on canvas. Over time I added watercolor, charcoal, pastel, pencil, collage, or a mixture of all of them, mixed media. Working with master printer John Gruenwald, I learned how to make lithographs, etchings, aquatints, monotypes and often a mixture of these as well.

One self-portrait is only a self-portrait, but a series is a biography.

— Jan Serr, March 2024

March 29 – May 10, 2024

Wriston Art Galleries, Lawrence University

613 East College Avenue, Appleton, WI 54911 • M-F 10-4pm, SAT 12-4pm, SUN Closed

Cover: Self-Portrait in Turban (modified), 2001, oil on linen, 36 x 24 in., JS2001.006.

Jan Serr: Face It





Self-Portrait Looking Over Shoulder with Diagonal, 1966, oil on canvas, 44 x 35 in., JS1966.004.

Works in the Exhibition

Self-Portrait, Close Up with Red
Background, 1966
Oil on canvas
29 $\frac{3}{4}$ x 28 $\frac{1}{4}$ in.
JS1966.003

Self-Portrait Looking Over Shoulder
with Diagonal, 1966
Oil on canvas
44 x 35 in.
JS1966.004



Diary: Self-Portrait with Turk's Cap Lilies, 1983, oil on linen, 60 x 40 in., JS1983.006.

Self-Portrait with Kitchen Range, 1968

Oil on canvas

57 ¼ x 40 in.

JS1968.003

Diary: Self-Portrait with Head Phones, 1982

1982

Watercolor on paper

24 x 18 in.

JS1982.049

Diary: Self-Portrait with Turk's Cap

Lilies, 1983

Oil on linen

60 x 40 in.

JS1983.006

Diary: Self-Portrait with Turk's Cap Lily, 1983

1983

Lithograph on paper

29 ¾ x 22 in.

JS1983.009.010

Diary: Self-Portrait with Black Stetson, 1983

Lithograph on paper

29 ¾ x 22 in.

JS1983.002.001

Self-Portrait with Kalipha under

Sycamore Tree, 1984

Monotype on paper

24 ¼ x 18 ¼ in.

JS1984.008

Diary: Self-Portrait Looking Over Left

Shoulder, 1984

Lithograph on paper

25 ¼ x 18 ¾ in.

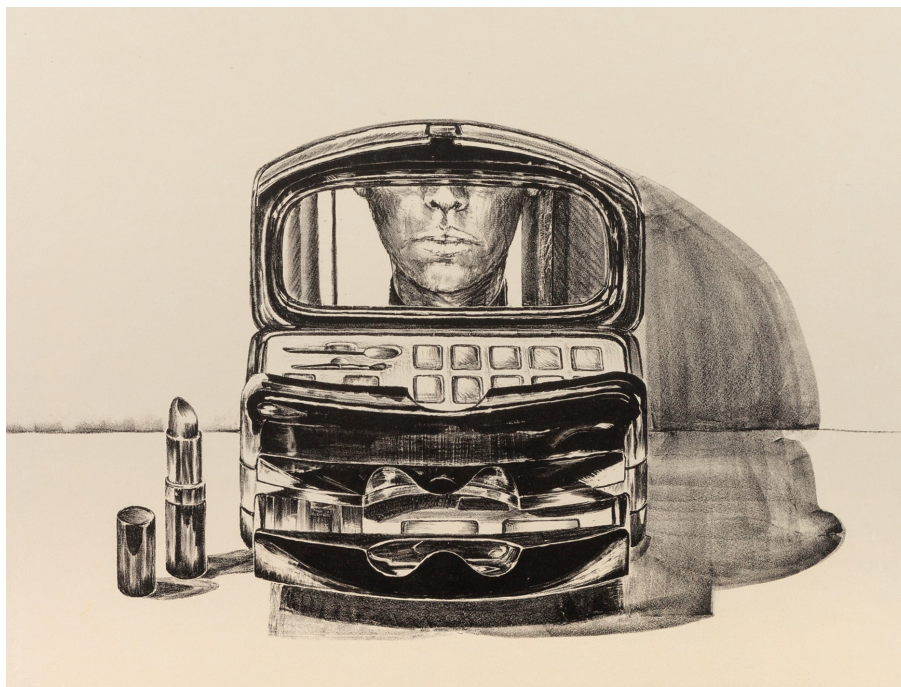
JS1984.014.012



Diary: Self-Portrait with Turk's Cap Lily, 1983, lithograph on paper, 29 ¾ x 22 in., JS1983.009.010.



Diary: Self-Portrait with Black Stetson, 1983, lithograph on paper, 29 ¾ x 22 in., JS1983.002.001.



Diary: Makeup Kit (detail), 1986, lithograph with chine-collé on paper, 22 ¼ x 30 in., JS1989.003.026.

Diary: Self-Portrait on Couch (Reclining on Right Side), 1984

Acrylic brush drawing on paper

30 x 44 in.

JS1984.020

Diary: Self-Portrait Reclining with Hands Behind Head and Apple, 1984

Ink on paper

19 ⅝ x 25 ⅞ in.

JS1984.025

Diary: Self-Portrait on Couch (Sitting Up), 1984

Acrylic brush drawing on paper

30 x 44 in.

JS1984.021

Diary: Makeup Kit, 1986

Lithograph with chine-collé on paper

22 ¼ x 30 in.

Artist Proof 6/7

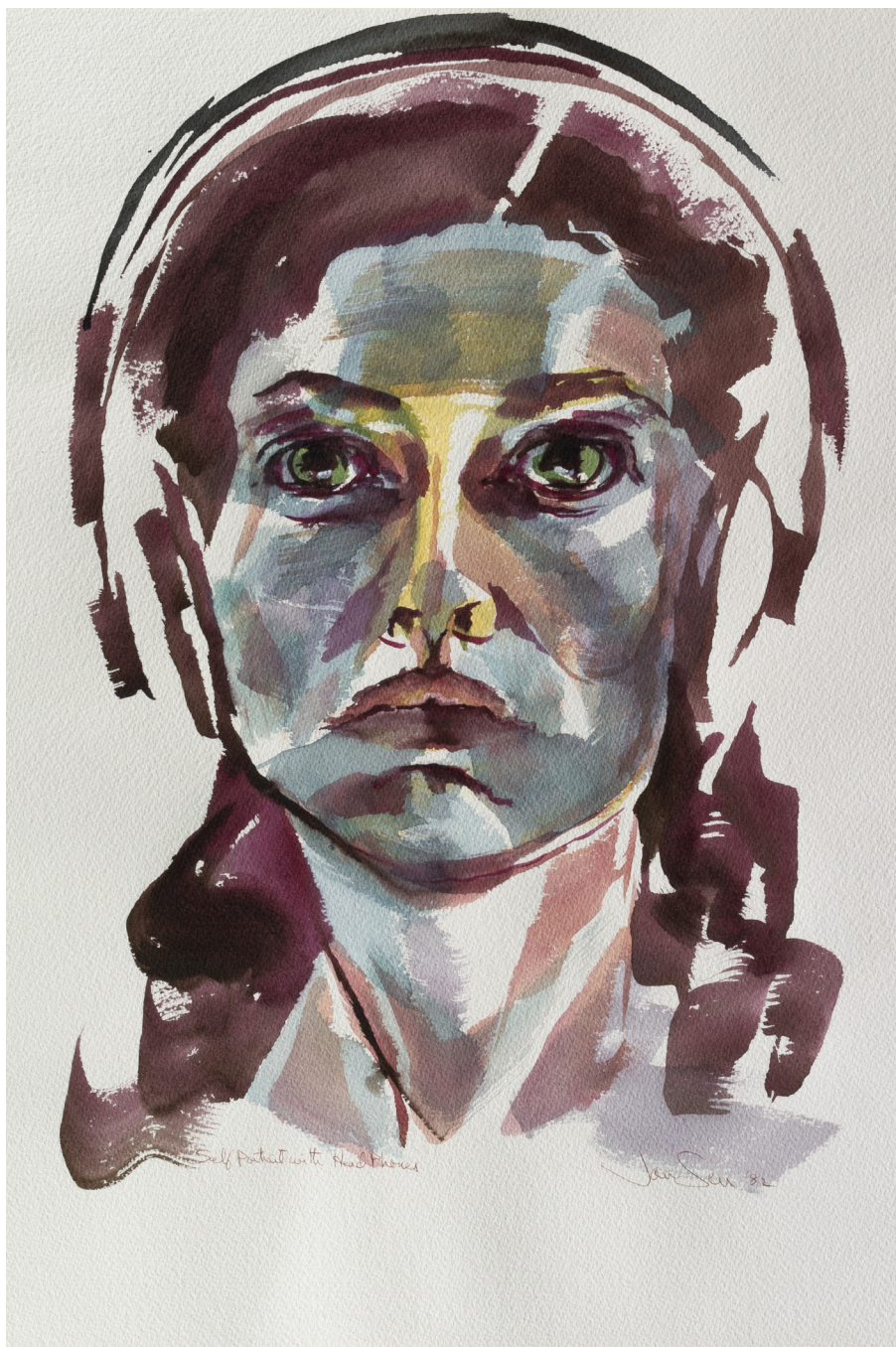
JS1986.003.026

Diary: Self-Portrait Looking Over Right Shoulder, 1984

Acrylic brush drawing on paper

43 ½ x 30 in.

JS1984.024



Diary: Self-Portrait with Head Phones (detail), 1982, watercolor on paper, 24 x 18 in., JS1982.049.



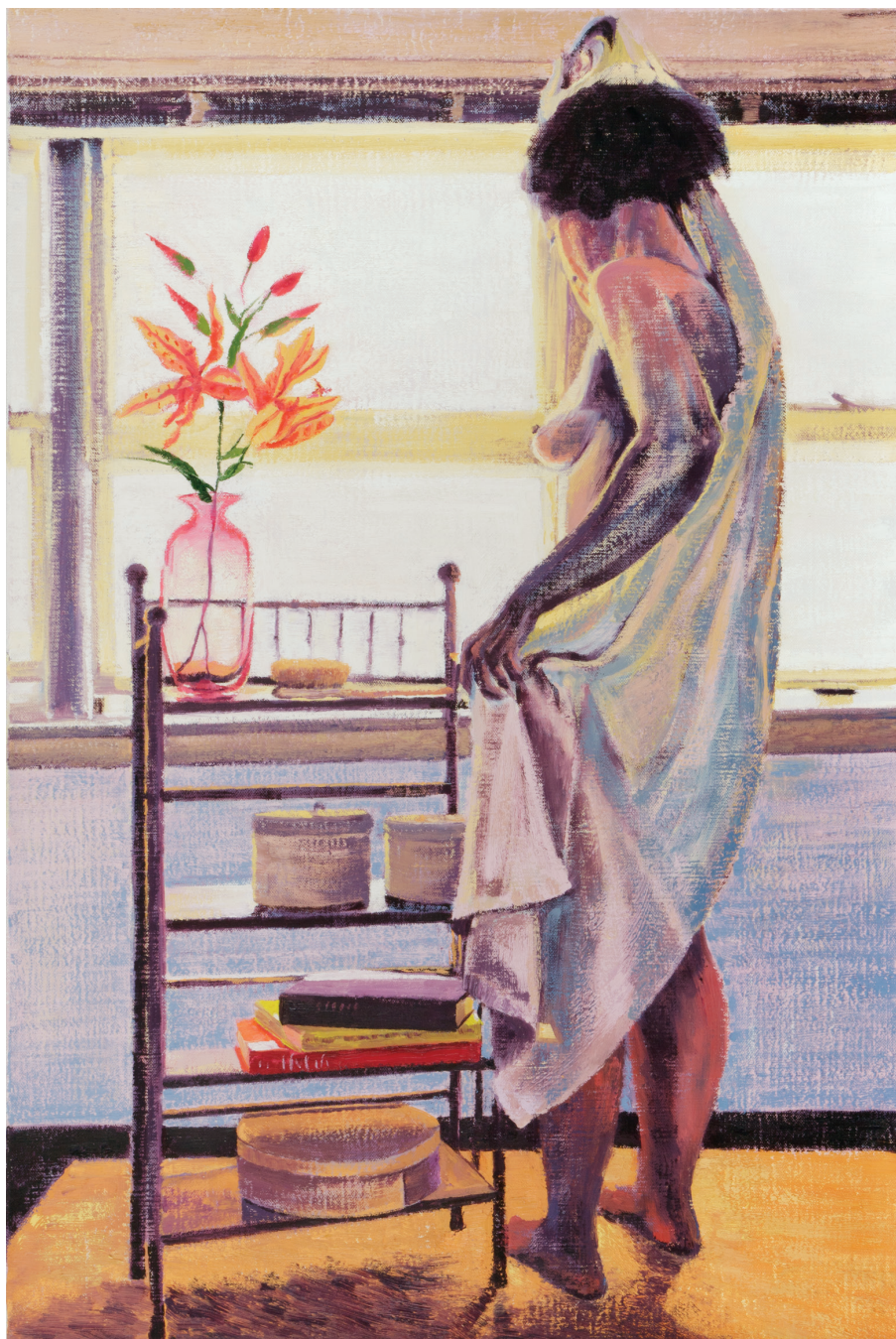
Diary: Self-Portrait on Couch (Reclining on Right Side), 1984, acrylic brush drawing on paper, 30 x 44 in., JS1984.020.



Diary: Self-Portrait on Couch (Sitting Up), 1984, acrylic brush drawing on paper, 30 x 44 in., JS1984.021.



Diary: Self-Portrait Looking Over Right Shoulder, 1984, acrylic brush drawing on paper, 43 ½ x 30 in., JS1984.024.



Women in Interiors: Drying off with Towel, 1993, oil on linen, 30 x 20 in., JS1993.001.



Self-Portrait in Black Slip in Front of Window (detail), 1995, oil on linen, 17 ½ x 12 ½ in., JS1995.010.

Women in Interiors: Undressing With
Bowl of Fruit, 1993
Lithograph over color monotype
9 x 6 in.
Edition 15/24
JS1993.019.008

Women in Interiors: Drying Off with
Towel, 1993
Oil on linen
30 x 20 in.
JS1993.001

Women in Interiors: Putting on
Necklace, 1993
Lithograph over color monotype
9 x 6 in.
Edition 19/30
JS1993.004.034

Women in Interiors: Putting on Earring,
1993
Lithograph over color monotype
9 x 6 in.
Edition 12/25
JS1993.005.013

Women in Interiors: Washing Face, 1993
Lithograph over color monotype
9 x 6 in.
Edition 8/27
JS1993.017.008

Women in Interiors: untitled, 1993
Lithographic ink on paper
25 $\frac{7}{8}$ x 19 $\frac{5}{8}$ in.
Edition 1/1
JS1993.007

Self-Portrait in Black Slip in Front of
Window, 1995
Oil on linen
17 $\frac{1}{8}$ x 12 $\frac{1}{8}$ in.
JS1995.010

Women in Interiors: Combing Hair,
1996
Oil on linen
17 x 12 in.
JS1996.006

Self-Portrait in Turban, 2001
Oil on linen
36 x 24 in.
JS2001.006

Self-Portrait in Turban, 2002
Monotype on paper
11 $\frac{7}{8}$ x 8 $\frac{7}{8}$ in.
JS2002.036

Self-Portrait with Scarf, 2020
Charcoal and graphite on paper
31 x 22 in.
JS2020.001



Top Left: Women in Interiors: Putting on Necklace, 1993, lithograph over color monotype, 9 x 6 in., edition 19/30, JS1993.004.034. **Top Right:** Women in Interiors: Washing Face, 1993, lithograph over color monotype, 9 x 6 in., edition 8/27, JS1993.017.008. **Bottom Left:** Women in Interiors: Putting on Earring, 1993, lithograph over color monotype, 9 x 6 in., edition 12/25, JS1993.005.013. **Bottom Right:** Women in Interiors: Undressing With Bowl of Fruit, 1993, lithograph over color monotype, 9 x 6 in., edition 15/24, JS1993.019.008



Self-Portrait in Turban, 2002, monotype on paper, 11 $\frac{7}{8}$ x 8 $\frac{7}{8}$ in., JS2002.036.

Jan Serr: Face It

Published in conjunction with the exhibition *Jan Serr: Face It* at the Hoffmaster Gallery, Wriston Art Galleries, Lawrence University, Appleton, Wisconsin.

March 29–May 10, 2024

© 2024. All rights reserved.

No part of this publication may be reproduced or transmitted in any form or by any means, including photocopy, recording, or any other information storage and retrieval system, without prior permission in writing.

Individual works of art appearing in this publication are protected by copyright and may not be reproduced in any form without permission from the artist.

Exhibition and Publications

Avery Pelekoudas, Emily Hankins,
Jan Serr, Mia Dreher

Images: Alan Magayne-Roshak, Jon
Bolton, Kate Hawley

Exhibition Logistics

Beth A. Zinsli, Wriston Art Galleries,
Lawrence University.
Christine Anderson, David Mueller,
Warehouse Art Museum.

Guardian Fine Art Services, Milwaukee, WI

Printing: The Fox Co., Milwaukee, WI



LAWRENCE UNIVERSITY
APPLETON, WISCONSIN

Lawrence University of Wisconsin, through its undergraduate residential college and Conservatory of Music, educates students in the liberal arts and sciences. The university is devoted to excellence and integrity in all of its activities and committed to the development of intellect and talent, the pursuit of knowledge and understanding, the cultivation of sound judgment, and respect for the perspectives of others. Lawrence prepares students for lives of achievement, responsible and meaningful citizenship, lifelong learning, and personal fulfillment. As a diverse learning community of scholars and artists, we actively foster a transformative process that emphasizes engaged learning, supported by an environment of rich educational opportunities in a residential campus setting.

lawrence.edu

